

MARCH 11, 2019



VILLAGE

NEIGHBORHOOD ASSOCIATION

CONTACT:
ERIC.HOFMANN@JCVILLAGE.ORG
INFO@JCVILLAGE.ORG

JCVILLAGE.ORG
NEXTDOOR.COM
FACEBOOK.COM



VILLAGE NEIGHBORHOOD ASSOCIATION BOARD OF DIRECTORS

PRESIDENT: ERIC HOFMANN

VP, DIRECTOR OF COMMUNICATIONS: ROBINSON HOLLOWAY

VP, DIRECTOR OF MEMBERSHIP: EVELYN CHAN

TREASURER: IRENE BARNABY

SECRETARY: JOSEPH VITA

BOARD MEMBER AT LARGE: PETER FARRELL

BOARD MEMBER AT LARGE: ROB CROW, FOUNDER

BOARD MEMBER AT LARGE: JOELLE CHILAZI

BOARD MEMBER AT LARGE: MARC ISIKOFF



AGENDA

- 1 VILLAGE BUSINESS SPOTLIGHT**
- 2 DEVELOPMENT UPDATES**
- 3 GREAT JERSEY CITY CLEANUP**
- 4 COUNCILMAN JAMES SOLOMON**
- 5 OPEN FORUM**



1 VILLAGE BUSINESS SPOTLIGHT

- JERSEY CITY PLASTIC BAG BAN**

ORDINANCE 18-065 IN EFFECT JUNE 28, 2019



2 DEVELOPMENT UPDATES 333 NEWARK AVENUE



3 GREAT JERSEY CITY CLEANUP APRIL 13

ORGANIZED BY KEEP JERSEY CITY BEAUTIFUL



Jersey City Plastic Bag Ban

Starts June 28th, 2019

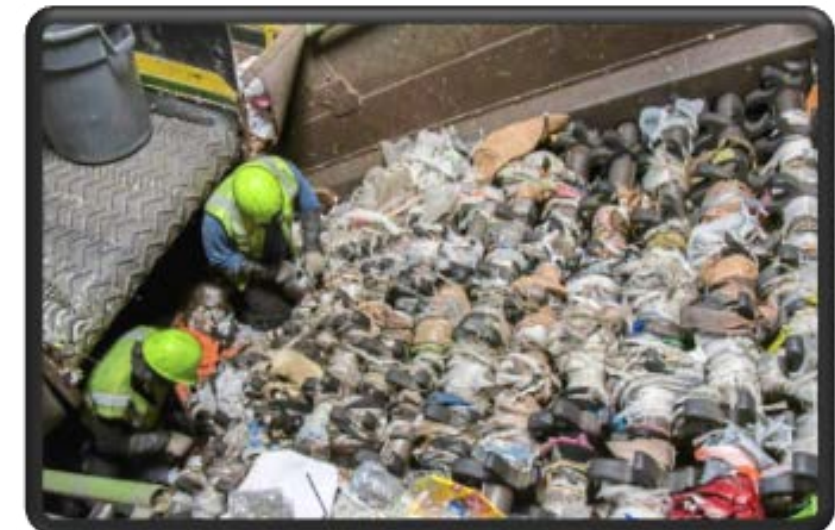


WWW.JCMAKEITGREEN.ORG
WWW.JERSEYCITYNJ.GOV



Why are Plastic Bags a Problem?

- Plastic bags are difficult to recycle
 - Clog machinery and hinder recycling process
 - Contaminate recycling stream
- Plastic bags pollute our land, water, and wildlife
 - Create litter in our parks, streets, and storm drains
 - Pollute our waterways, oceans, and marine life
 - Break down into microplastics that end up in the food chain
- Plastics in landfills can take up to 1000 years to decompose
 - Poorly managed landfills could potentially leak pollutants into the soil and water



City Ordinance 18-065

- 🌱 Ban effective June 28, 2019
- 🌱 Prohibits retailers from providing single-use plastic carry-out bags and non-recyclable paper bags to customers at the checkout counter
 - 🌱 Corner stores, supermarkets, restaurants, clothing shops, liquor stores, and hardware stores
- 🌱 Retailers are NOT required to charge a fee but may choose to
- 🌱 Non-compliant retailers shall be subject to a minimum fine of \$100 per offense

What Bags are Banned?

X Lightweight plastic bags with a thickness of 2.25 mils or less (= 2-3 sheets of office paper), including “biodegradable plastic” and “compostable plastic” bags.

X Non-recyclable paper bags and all paper bags that do not include at least 40% post-consumer recycled content.



What Bags are Allowed?

- Loose produce or bulk item bags
- Laundry/dry cleaning bags
- Newspaper bags
- Bags used to wrap frozen food, meat, or fish
- Garbage, pet waste, and yard waste bags
- Woven or fabric bags
- Paper or cardboard bags
 - *100% recyclable and must contain at least 40% post-consumer recycled content*
- Heavyweight reusable plastic bags
 - *at least 2.25 mils in thickness, can be used at least 125 times, and are able to be cleaned*



Additional Information

🌱 Visit WWW.JERSEYCITYNJ.GOV/BAG-BAN

🌱 Email us at makeitgreen@jcnj.org



CITY

4 COUNCILMAN JAMES SOLOMON

MEET THE COMMUNITY

5 OPEN FORUM